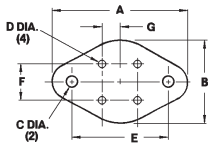
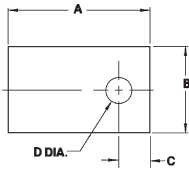


# Sil-Pad® Configurations

Metric Measurements

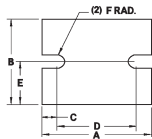


4 Lead TO-66	Part Number Suffix	"A"	"B"	"C"	Dimensions "D"	"E"	"F"	"G"
	-84	33.32	19.35	3.56	1.57	24.38	5.08	2.54

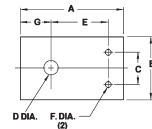


TO-220

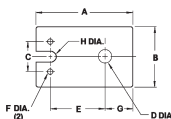
Plastic Power	Part Number Suffix	"A"	"B"	Dimensions "C"	"D"	Part Number Suffix	"A"	Dimensions "B"	"C"	"D"	
Various (Clip Mount)	-35	18.03	12.70	4.06	3.58	Various	-104	25.40	19.05	7.62	3.56
	-43	19.05	12.70				-107	20.57	23.11	4.32	3.73
	-50	11.10	7.92	3.56	2.36		-110	24.99	19.99		
	-51	17.45	14.27	5.54	3.18		-114	21.01	24.00	5.00	3.81
	-52	21.72	16.00	5.84	2.36		-116	21.72	16.00	5.79	3.10
	-54	19.05	12.70	4.75	3.73		-117	21.01	18.01	6.50	3.20
	-55	15.49	14.22	6.22	3.18		-118	19.00	14.00	5.51	3.20
	-56	21.72	14.27	5.54	3.18		-119	11.10	7.90	3.61	2.79
	-58	19.05	12.70	4.75	3.18		-120	18.49	11.99	3.99	2.49
	-60	11.10	7.92	3.56	3.10	TO-3P	-122	28.96	20.57	9.02	3.73
	-61	19.05	10.41	5.72	3.96		-126	24.00	19.00	6.50	4.11
	-62	19.05	15.24	6.10	3.81		-128	24.99	42.01	8.00	3.99
	-63	19.05	15.24	6.10	2.92		-131	18.01	13.00	4.50	3.10
	-64	12.70	9.78	4.32	3.05		-132	11.99	8.00	3.99	3.20
	-68	28.58	15.88	5.08	3.68		-133	22.00	18.01	6.50	3.20
	-70	35.81	20.57	9.02	3.73		-134	24.00	18.01	5.79	3.20
	-90	21.84	18.80	5.08	4.06		-136	31.75	25.40		
	-102	22.00	16.51	5.51	3.61		-137	31.75	25.40	6.55	3.23
	-103	19.05	20.32	3.81	4.06		-138	31.75	25.40	6.55	3.76



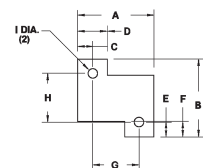
Power Module	Number Suffix	"A"	"B"	Dimensions "C"	"D"	"E"	"F"
	-67	38.10	22.86	3.81	30.48	11.43	1.90
	-101	63.50	50.80	8.74	46.02	25.40	3.96



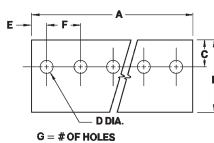
Plastic Power	Part Number Suffix	"A"	"B"	Dimensions "C"	"D"	"E"	"F"	"G"
	-57	23.11	12.70	5.08	3.18	14.73	1.17	6.73
	-89	24.97	19.05	10.97	3.96	16.89	2.57	5.51



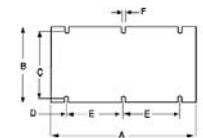
Plastic Power	Part Number Suffix	"A"	"B"	"C"	Dimensions "D"	"E"	"F"	"G"	"H"
	-66	25.40	12.70	5.08	3.58	15.90	1.17	5.56	0.81



Power Resistor	Part Number Suffix	"A"	"B"	"C"	"D"	Dimensions "E"	"F"	"G"	"H"	"I"
RH-25	-94	30.15	30.61	5.94	11.91	5.38	3.96	18.26	19.84	3.56
RH-50	-95	53.16	32.13	6.73	13.46	5.33	6.48	39.70	21.46	3.56
RH-5	-96	18.42	19.58	3.56	7.11	3.56	3.96	11.30	12.47	2.36
RH-10	-97	20.45	22.61	3.23	6.35	3.30	4.83	14.00	16.00	3.07
RH-25	-98	29.21	29.97	5.87	10.80	4.83	6.86	17.48	20.32	3.73
RH-50	-99	49.91	31.39	5.03	10.26	3.35	6.68	39.85	24.69	3.30



TO-220 Multiples	Part Number Suffix	"A"	"B"	Dimensions "C"	"D"	"E"	"F"	# of Holes
2 Parts	-34	25.40	19.05	4.75	3.18	6.35	12.70	2
3 Parts	-36	38.10	19.05	4.75	3.18	6.35	12.70	3
	-37	50.80	19.05	4.75	3.18	6.35	12.70	4
	-38	63.50	19.05	4.75	3.18	6.35	12.70	5
	-39	76.20	19.05	4.75	3.18	6.35	12.70	6
	-40	88.90	19.05	4.75	3.18	6.35	12.70	7
	-41	101.60	19.05	4.75	3.18	6.35	12.70	8

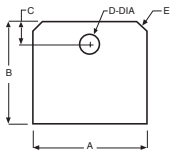


Power Module	Part Number Suffix	"A"	"B"	Dimensions "C"	"D"	"E"	"F"
	-108	116.84	60.96	53.97	12.70	45.72	3.18
	-140	116.8	61.00	53.30	12.70	45.70	3.80
	-141	57.90	61.00	53.40	12.40	16.50	3.80
	-142	57.91	36.83	32.26	12.45	16.50	3.30

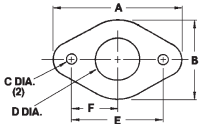
ORDERING

# Sil-Pad® Configurations

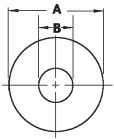
## Metric Measurements



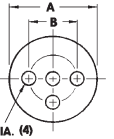
Multiwatt	Part Number		Dimensions			
	Suffix	"A"	"B"	"C"	"D"	"E"
	-124	22.15	20.07	4.06	3.76	3.0 x 45°
	-125	22.00	19.99	3.99	3.91	2.0 x 45°



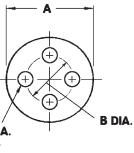
Multi-Lead TO-66	Part Number		Dimensions				
	Suffix	"A"	"B"	"C"	"D"	"E"	"F"
	-93	34.29	20.32	3.56	10.16	24.38	12.19



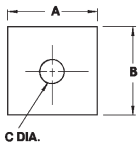
Diode Washer	Part Number		Dimensions		Part Number		Dimensions	
	Suffix	"A"	"B"	"A"	"B"	Suffix	"A"	"B"
Various	-19	12.95	3.56	Various	-75	9.14	6.60	
DO-4	-20	12.95	5.08	Various	-76	19.05	3.18	
DO-5	-21	20.32	6.60	Various	-77	20.32	4.83	
DO-4 (oversized)	-22	15.88	5.08	DO-8	-78	22.23	7.95	
DO-5 (oversized)	-25	25.40	6.60	Various	-79	29.97	13.08	
Various	-26	20.62	3.68	Various	-80	31.75	9.65	
Various	-27	20.62	2.92	Various	-81	38.10	5.08	
Various	-28	25.40	3.56	Various	-82	13.00	4.09	
Various	-32	38.10	12.70	Various	-111	15.01	5.51	



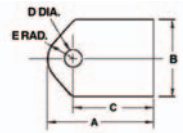
TO-36	Part Number		Dimensions	
	Suffix	"A"	"B"	"C"
	-08	27.00	17.53	4.83



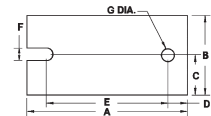
Small Power Devices	Part Number		Dimensions		
	Suffix	"A"	"B"	"C"	"D"
TO-5, 3 Holes	-09	9.14	5.08	1.02	
TO-18, 3 Holes	-12	6.35	2.54	0.91	
TO-18, 4 Holes	-13	6.35	2.54	0.91	
TO-5, 4 Holes	-33	9.14	5.08	1.02	
TO-5, 3 Holes	-44	9.91	5.08	1.02	
TO-5, 4 Holes	-45	9.91	5.08	1.02	



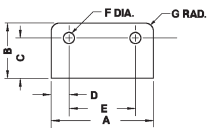
Rectifier	Part Number		Dimensions		
	Suffix	"A"	"B"	"C"	"D"
	-46	31.75	31.75	5.08	
	-47	28.58	28.58	3.56	
	-48	25.40	25.40	4.75	



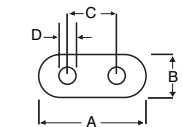
TIP Packages	Part Number		Dimensions			
	Suffix	"A"	"B"	"C"	"D"	"E"
Clip Mount	-42	24.99	19.99			5.21
TIP-36 Plastic Tip	-53	21.97	16.51	16.51	3.56	5.21
TO-3P	-65	32.00	19.99	24.99	3.61	5.21
Plastic Clip	-73	24.99	19.99	17.98	3.61	5.21



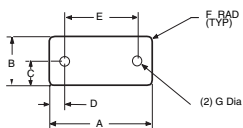
Power Module	Part Number		Dimensions					
	Suffix	"A"	"B"	"C"	"D"	"E"	"F"	"G"
	-100	63.75	32.00	16.00	7.75	48.26	5.21	5.21
	-123	41.00	27.99	14.00	3.99	30.99	3.00	3.00



SIP Package	Part Number		Dimensions					
	Suffix	"A"	"B"	"C"	"D"	"E"	"F"	"G"
	-105	36.83	21.29	15.54	6.22	24.38	4.32	3.05



Power Module	Part Number		Dimensions		
	Suffix	"A"	"B"	"C"	"D"
	-115	11.99	5.00	4.90	0.79

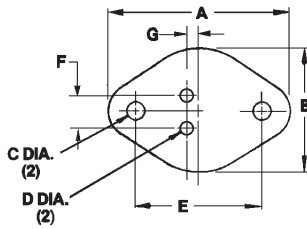


Power Module	Part Number		Dimensions					
	Suffix	"A"	"B"	"C"	"D"	"E"	"F"	"G"
	-109	34.29	16.31	8.15	4.95	24.38	1.52	3.18

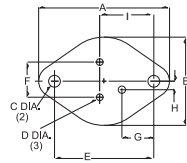
ORDERING

# Sil-Pad® Configurations

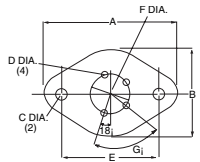
Metric Measurements



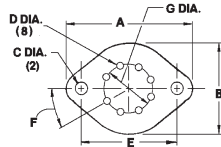
TO-3 Style	Part Number Suffix	"A"	"B"	"C"	Dimensions "D"	"E"	"F"	"G"
	-02	45.21	31.75	3.56	2.36	30.15	10.92	1.83
	-03	39.70	26.67	3.56	2.03	30.15	10.92	1.83
	-04	41.91	28.96	3.10	1.57	30.15	10.92	1.83
	-05	41.91	28.96	3.56	2.36	30.15	10.92	1.83
	-06	41.91	28.96	4.19	1.57	30.15	10.92	1.83
	-07	45.21	31.75	4.19	2.39	30.15	10.92	1.83
	-10	36.58	25.40	3.56	1.90	24.38	5.08	2.54
	-11	33.32	19.35	3.56	1.57	24.38	5.08	2.54
	-15	45.21	31.75	3.56	1.17	30.15	10.92	1.83
	-16	52.58	39.62	3.10	1.57	30.15	10.92	1.83
	-17	41.91	28.96	3.56	1.17	30.15	10.92	1.83
	-18	39.70	26.67	3.56	3.56	30.15	10.92	1.83
	-23	40.46	27.94	3.96	1.57	30.15	10.92	1.83
	-24	43.18	30.15	3.96	1.57	30.15	10.92	1.83
	-29	41.91	27.05	3.56	1.17	30.15	10.92	1.83
	-30	31.75	17.78	3.56	1.57	24.38	5.08	2.54
	-31	34.92	20.96	3.56	1.57	24.38	5.08	2.54
	-59 Leadless	41.91	28.96	4.19		30.15		
	-112	45.21	31.70	4.19	1.60	30.10	10.90	1.85
	-113	39.70	26.70	4.19	2.01	30.10	10.90	1.85
	-127	33.20	20.80	4.19	1.60	23.09	5.99	1.55
	-129	42.01	27.00	3.51	1.50	30.00	11.00	1.80
	-135	41.91	29.01	4.19	3.61	30.15	10.90	1.83



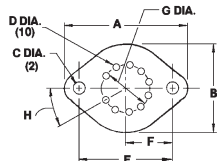
3 Lead TO-3	Part Number Suffix	"A"	"B"	"C"	Dimensions "D"	"E"	"F"	"G"	"H"	"I"
	-92	41.91	28.96	3.56	2.36	30.15	10.92	10.16	3.94	18.24



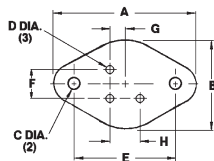
4 Lead TO-3	Part Number Suffix	"A"	"B"	"C"	Dimensions "D"	"E"	"F"	"G"
	-86	39.62	26.67	3.96	2.03	29.72	11.94	72°
	-87	39.70	26.67	3.96	1.60	30.15	11.94	72°



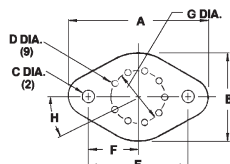
8 Lead TO-3	Part Number Suffix	"A"	"B"	"C"	Dimensions "D"	"E"	"F"	"G"
	-88	42.04	30.15	3.96	1.52	30.15	40°	12.70



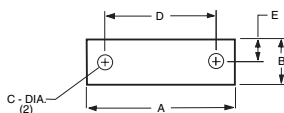
10 Lead TO-3	Part Number Suffix	"A"	"B"	"C"	Dimensions "D"	"E"	"F"	"G"	"H"
	-91	41.91	28.96	4.19	1.02	30.15	15.06	12.70	32.7°



3 Lead TO-66	Part Number Suffix	"A"	"B"	"C"	Dimensions "D"	"E"	"F"	"G"	"H"
	-85	32.38	19.05	3.96	2.54	24.38	5.08	2.54	5.08



9 Lead TO-66	Part Number Suffix	"A"	"B"	"C"	Dimensions "D"	"E"	"F"	"G"	"H"
	-83	36.58	25.40	3.56	1.40	24.38	12.19	8.26	36°



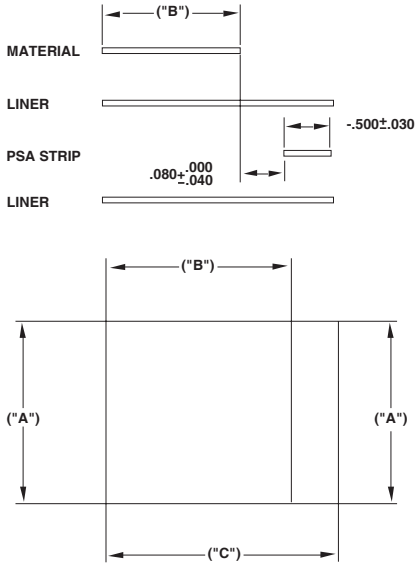
Power Module	Part Number Suffix	"A"	"B"	"C"	Dimensions "D"	"E"
	-130	40.64	12.19	4.19	30.40	6.10

ORDERING

# Hi-Flow<sup>®</sup> 225 Configurations

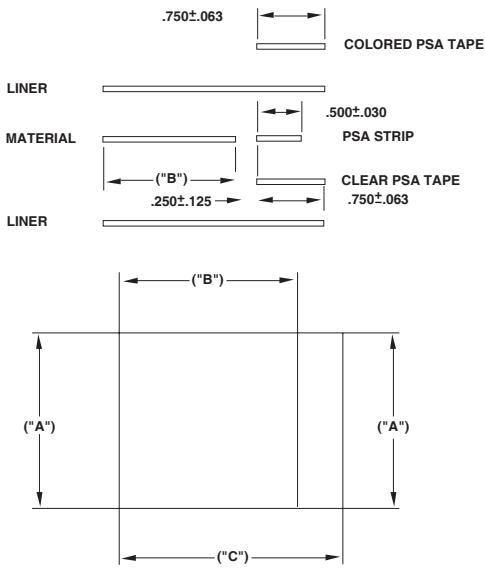
Metric Measurements

## Hi-Flow 225U Tab Configurations

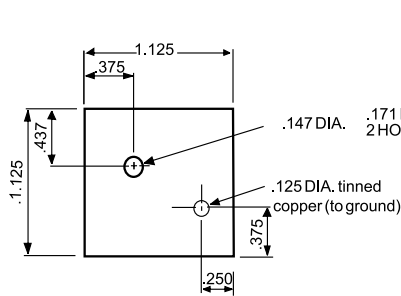


Part Number Suffix	Dimensions ( $\pm .015$ )			Min. Pcs/Roll
	"A"	"B"	"C"	
-143	38.10	38.10	63.50	5000
-144	35.00	35.00	60.40	5000
-145	31.75	31.75	57.15	5000
-146	25.40	25.40	50.80	7500
-147	17.78	17.78	43.18	10000
-148	12.70	12.70	38.10	15000
-149	7.62	7.62	50.80	22500

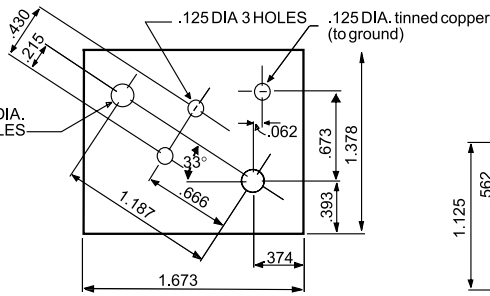
## Hi-Flow 225UT/225FT Tab Configurations



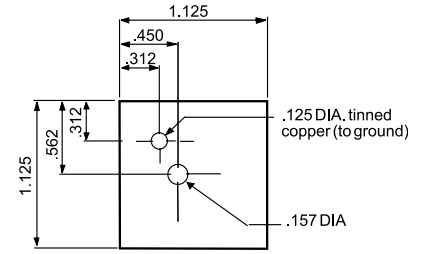
Part Number Suffix	Dimensions ( $\pm .015$ )			Min. Pcs/Roll
	"A"	"B"	"C"	
-150	41.91	41.91	67.31	3000
-151	38.10	38.10	63.50	5000
-152	34.93	34.93	60.33	5000
-153	31.75	31.75	57.15	5000
-154	25.40	25.40	50.80	7500
-155	17.78	17.78	43.18	10000
-156	12.70	12.70	38.10	15000



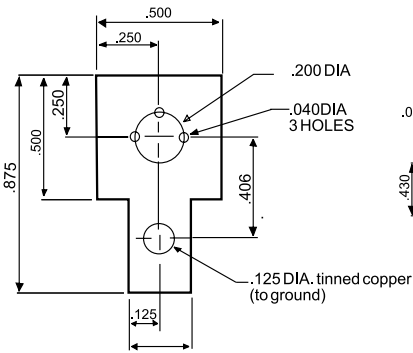
**P/N 09SPS01-002 (TO-220)**



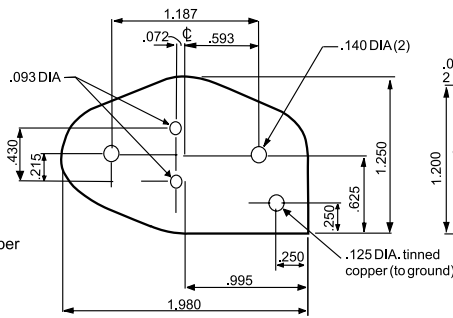
**P/N 09SPS01-001 (TO-3)**



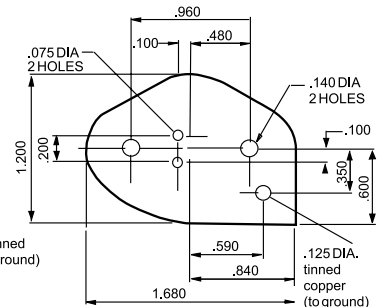
**P/N 09SPS01-009**



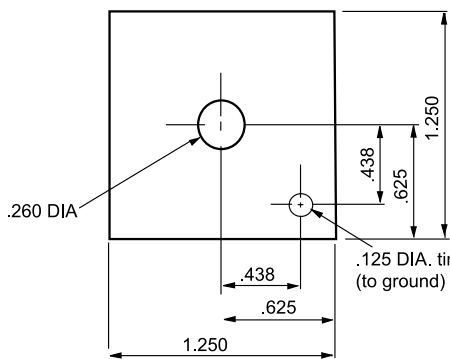
**P/N 09SPS01-011 (TO-5)**



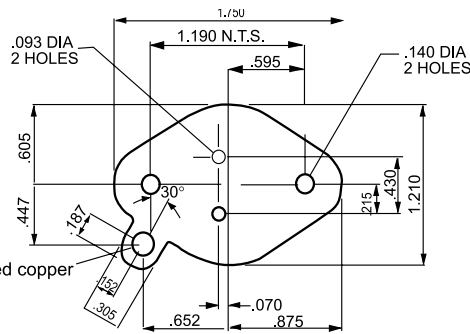
**P/N 09SPS01-016 (TO-3)**



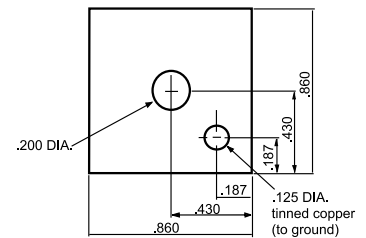
**P/N 09SPS01-017 (TO-66)**



**P/N 09SPS01-020 (DO-5)**



**P/N 09SPS01-023 (TO-3)**



**P/N 09SPS01-019 (DO-4)**

Contact the factory for other configurations.

ORDERING